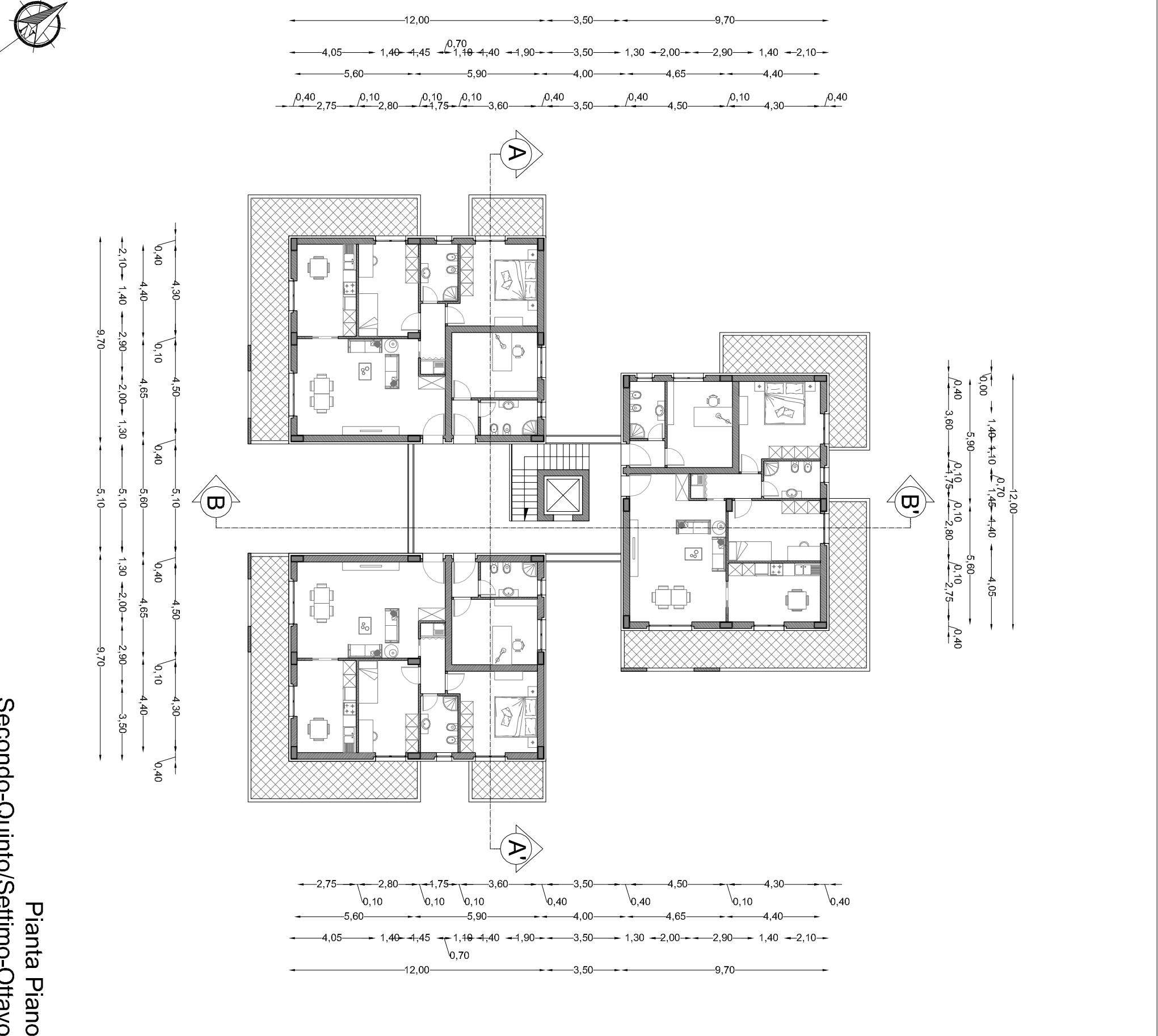
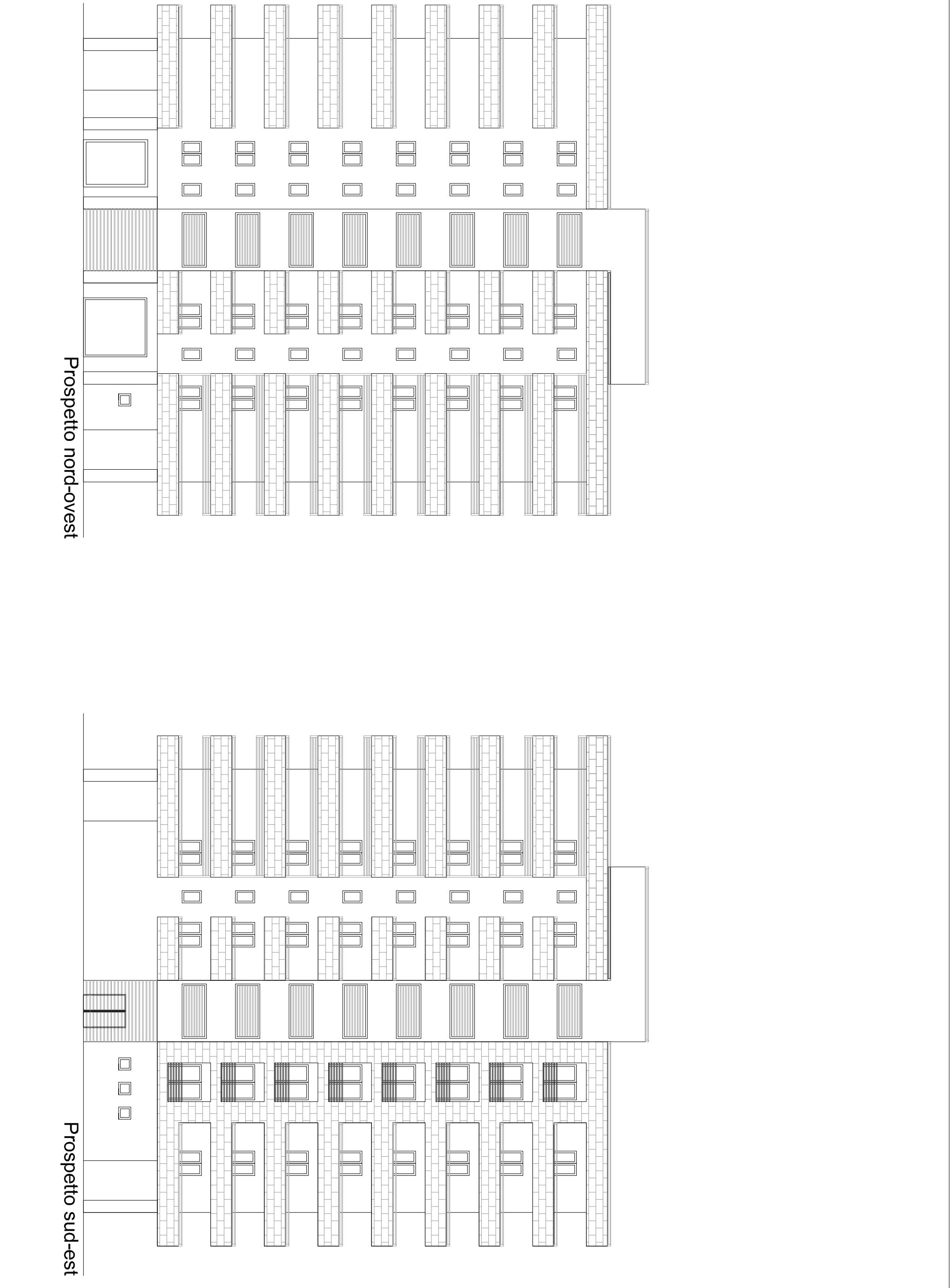


Verifica legge n. 122/89
Volume fabbricato = 8846,30 mc
Sup. minima parcheggi (1/10 del volume) = 884,63 mq
Sup. parcheggi pertinenziali di progetto = 1034,43 mq

Pianta Piano Intero

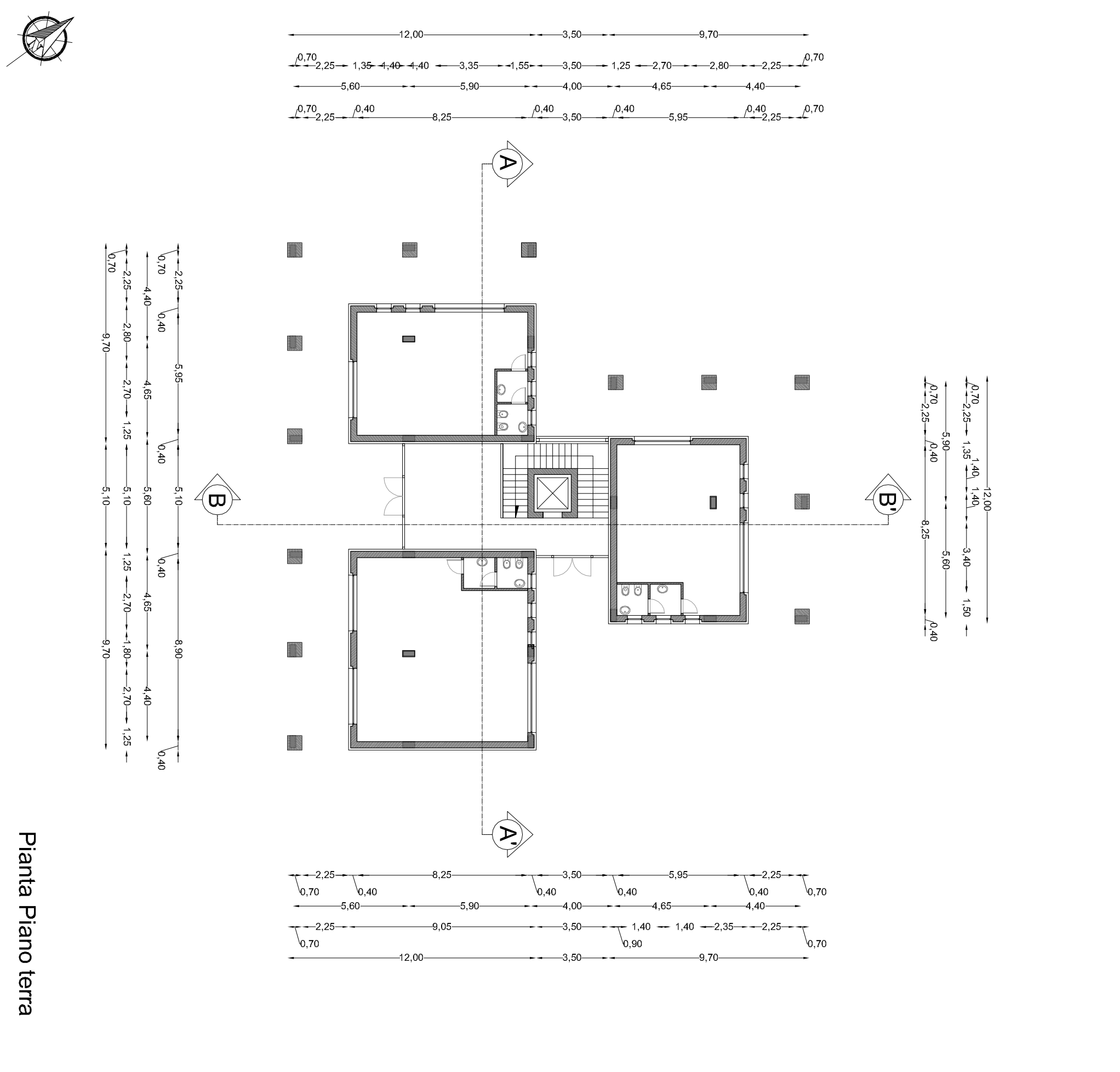


Pianta Piano Secondo-Quinto Settimo Chiaro

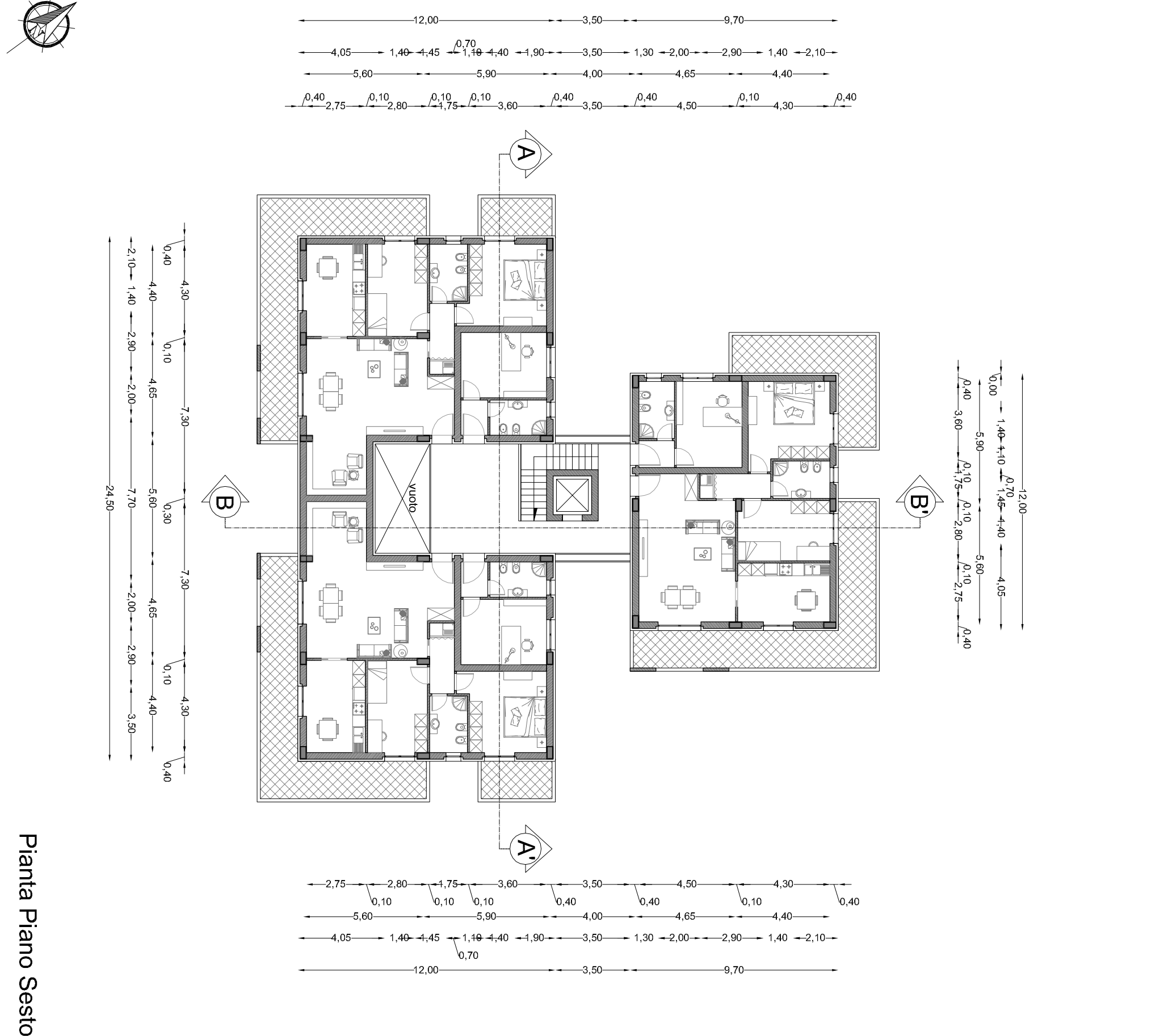


Prospetto nord-ovest

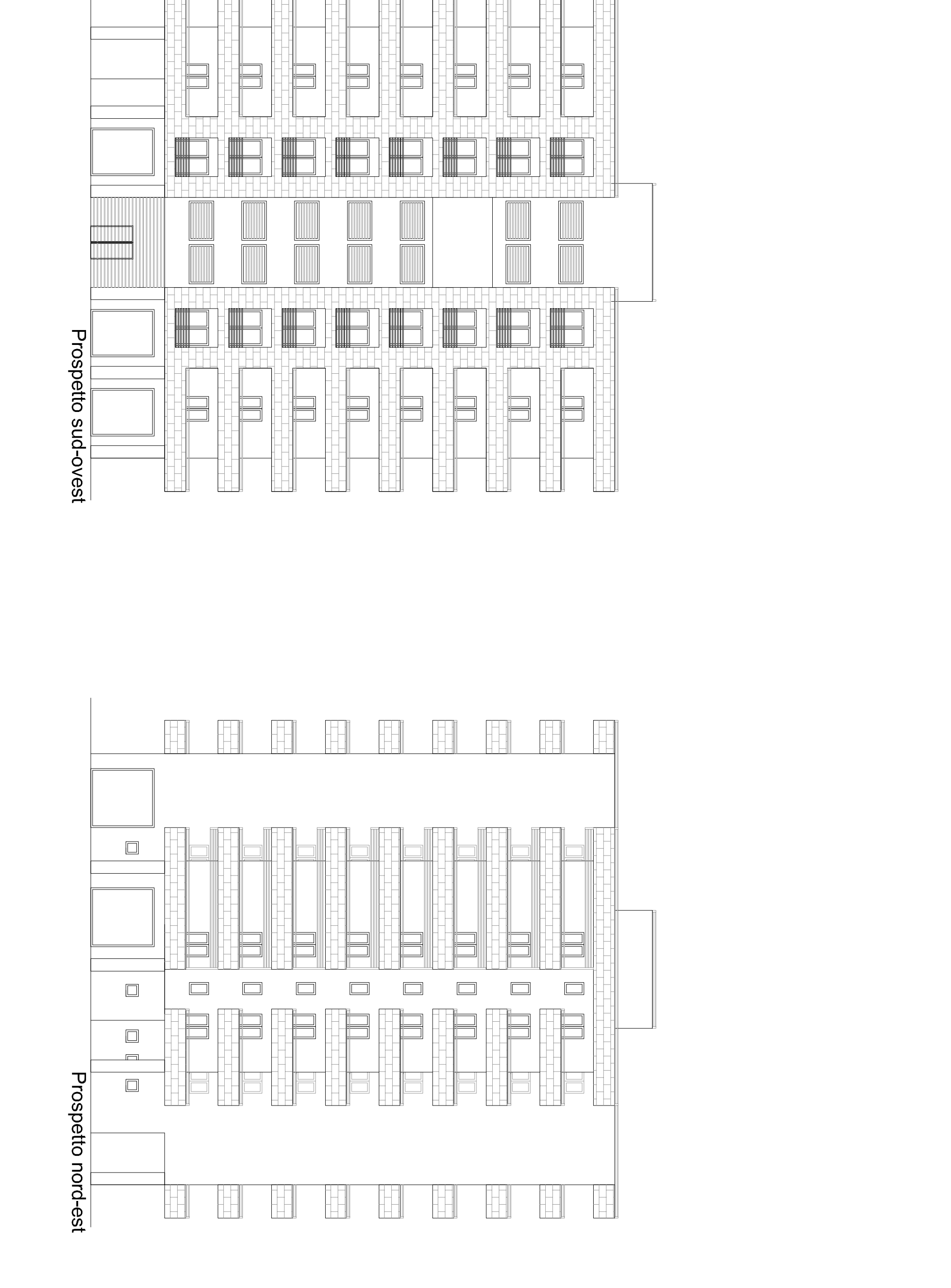
Prospetto sud-est



Pianta Piano terra

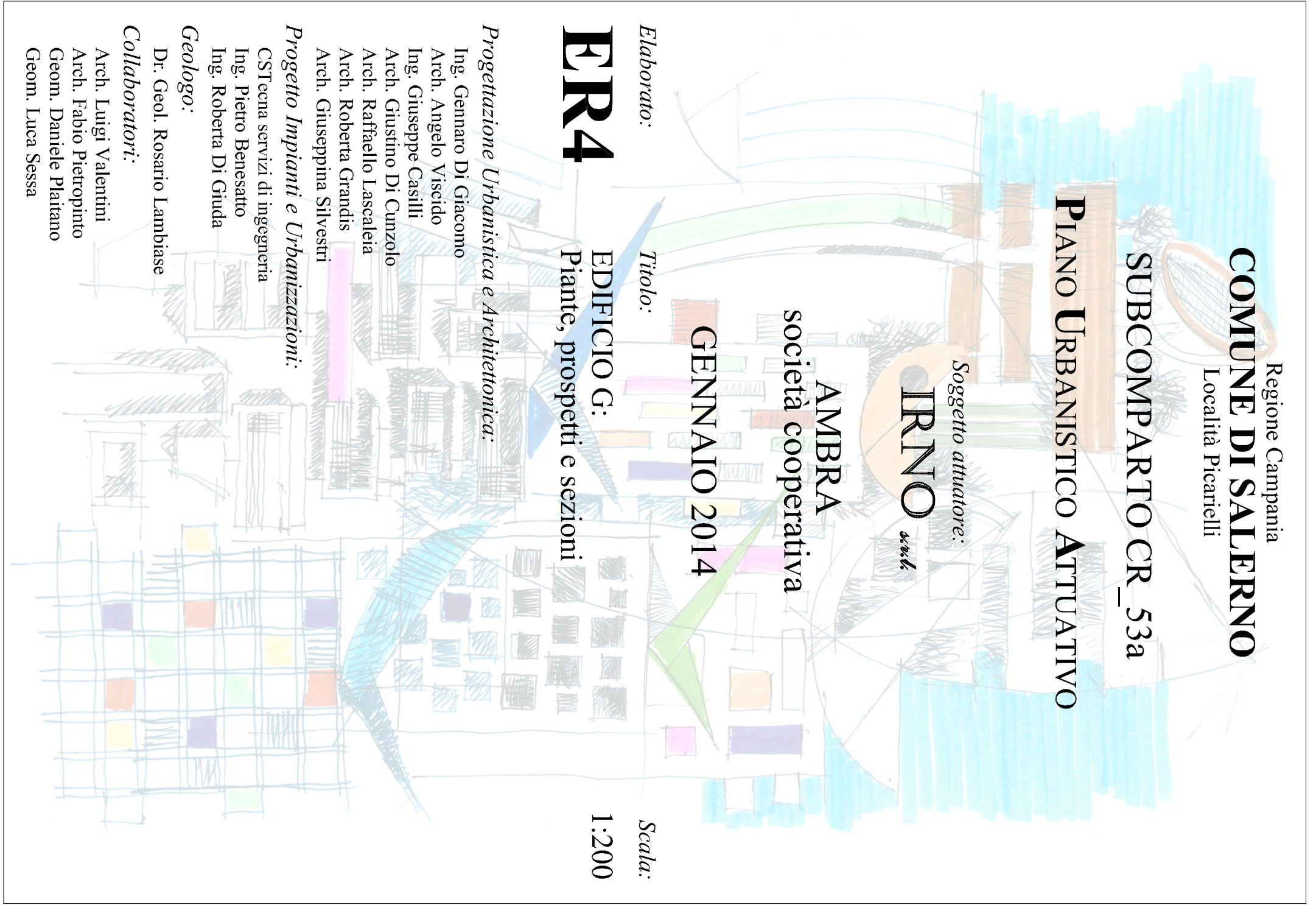


Pianta Piano Sesto

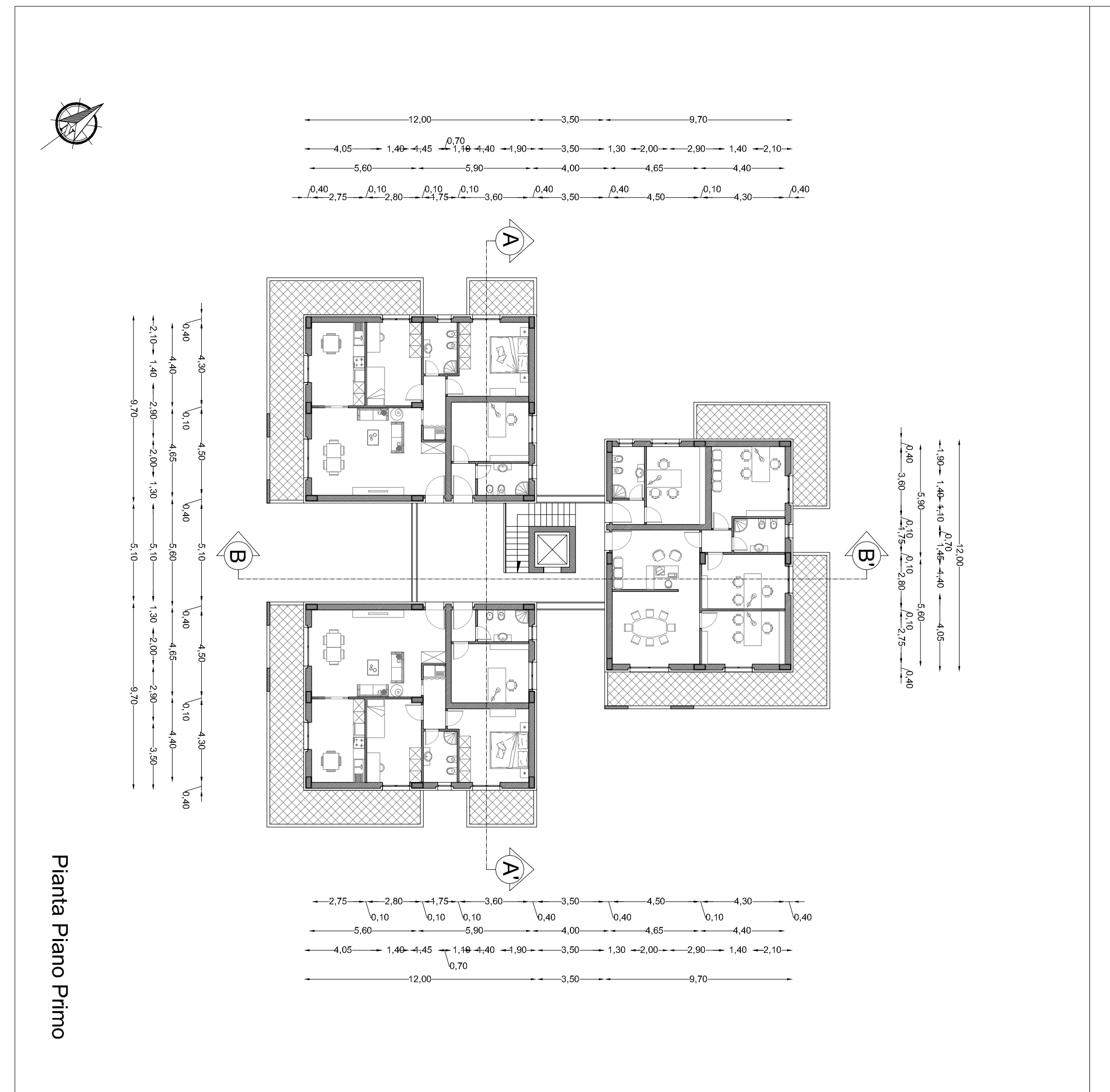


Prospetto sud-ovest

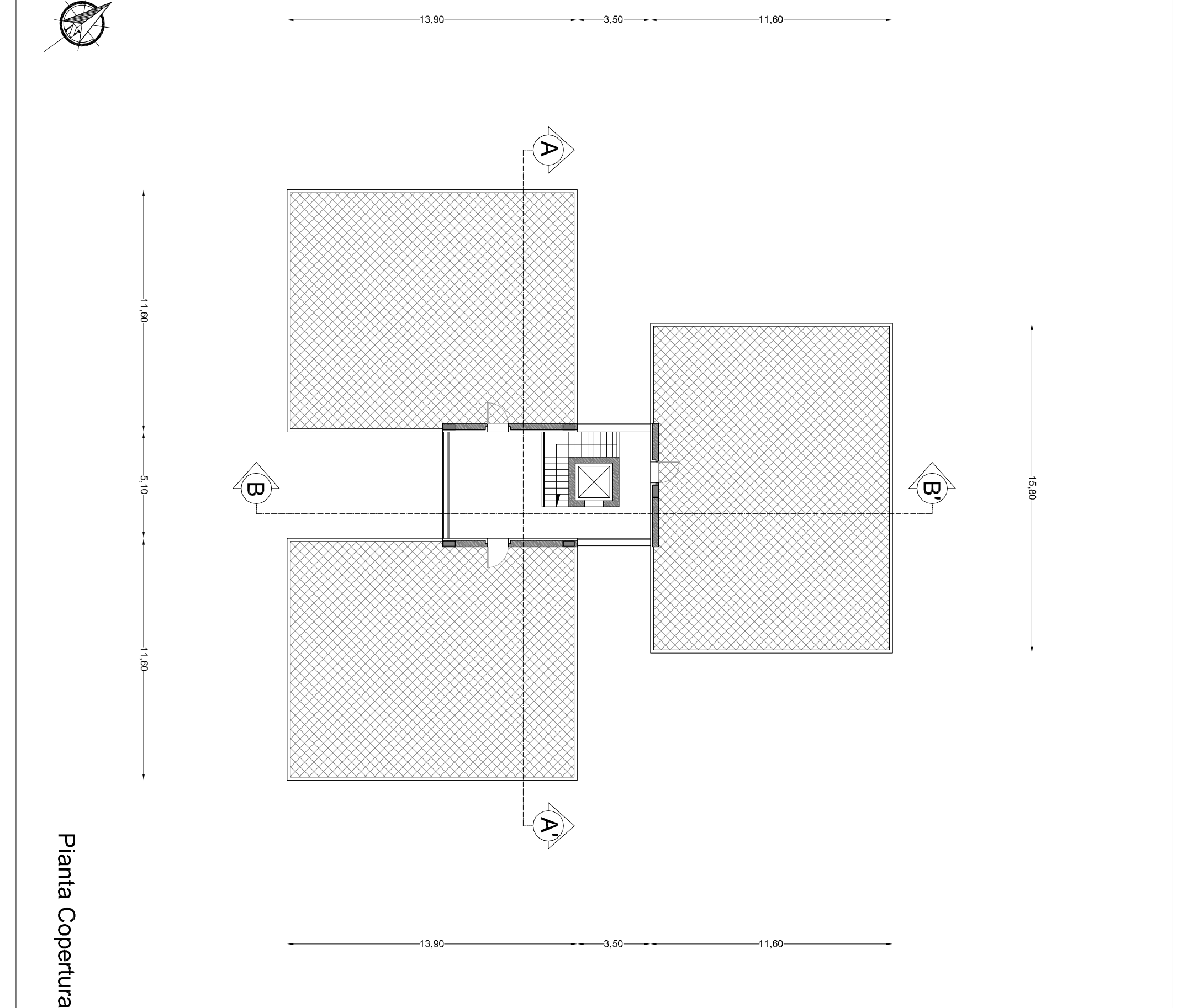
Prospetto nord-est



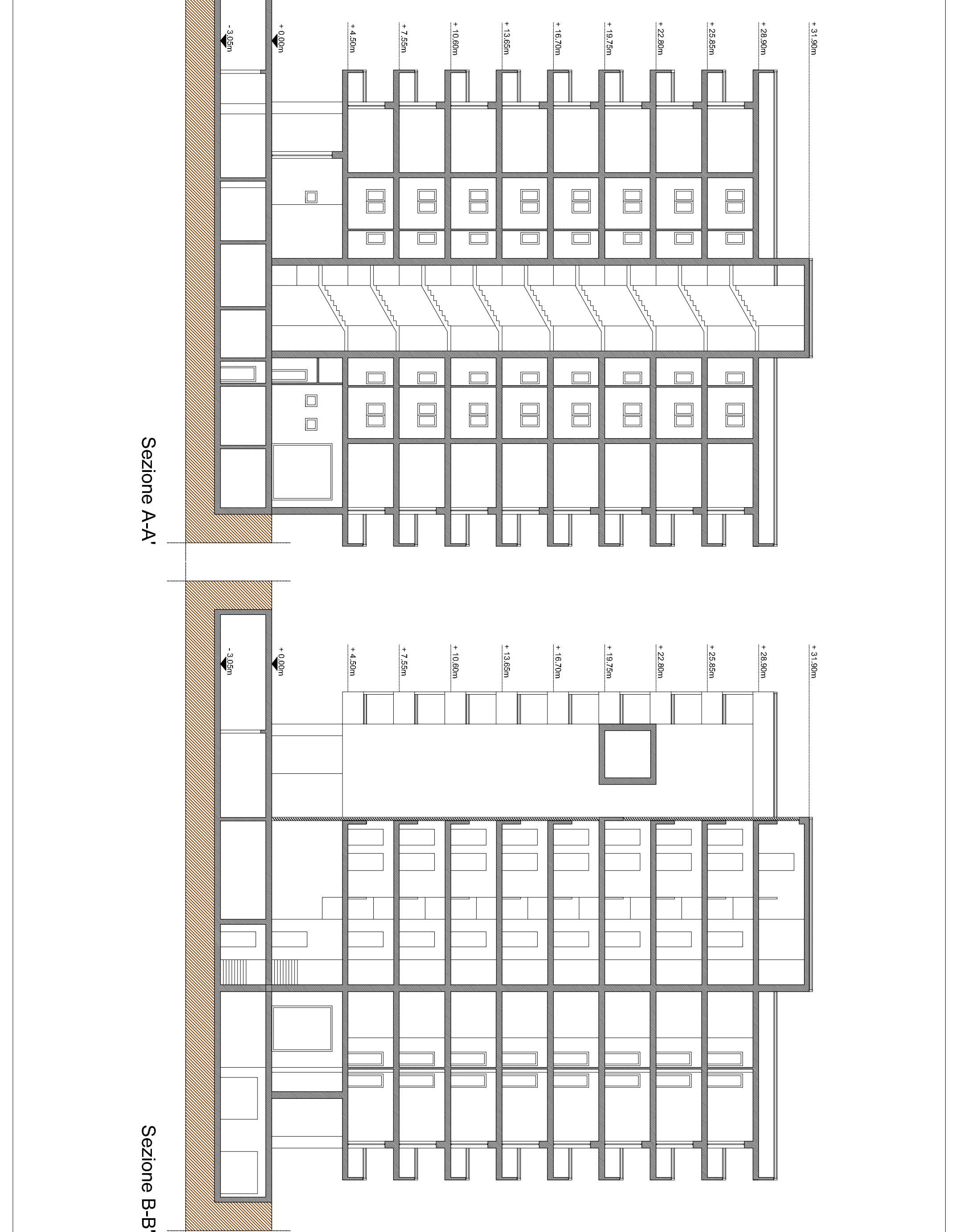
Elaborato:
ER4
EDIFICIO G:
Piane, prospetti e sezioni
Scala:
1:200



Pianta Piano Primo



Pianta Copertura



Sezione A-A'

Sezione B-B'